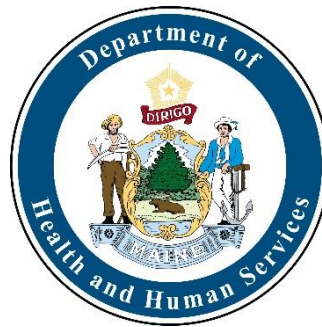


Office of Child and Family Services (OCFS)

Dr. Todd A. Landry

Director

January 2023



Office of Child and Family Services

The Office of Child and Family Services (OCFS) works in partnership with the community to ensure all Maine children and families are safe, stable happy, and healthy. The Office is made up of several different divisions:

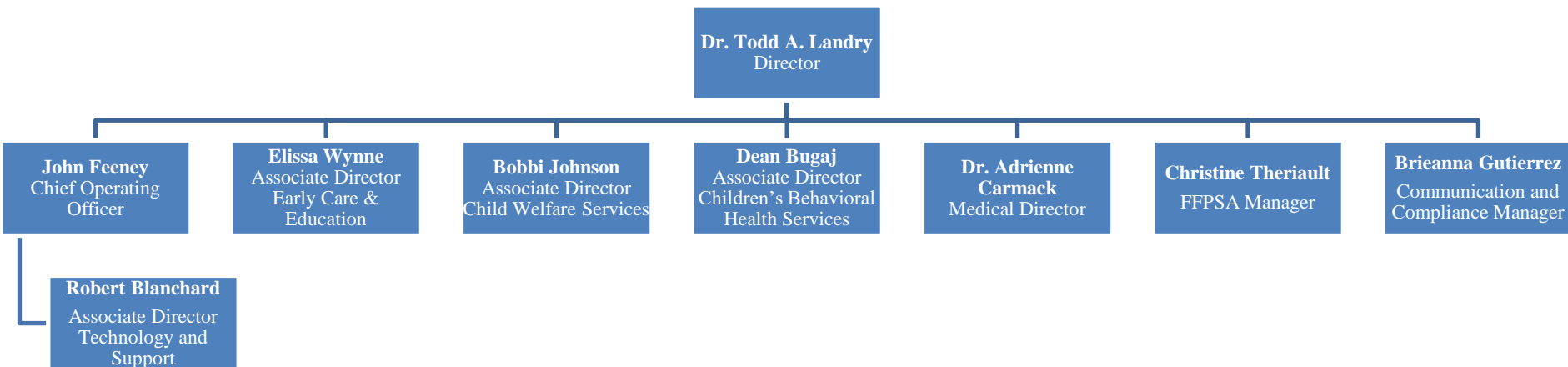
Children’s Behavioral Health Services – Supporting Maine families and children to access high-quality evidence-based behavioral health services. Assisting providers who serve children and families with behavioral health services to ensure programs are evidence-based and accessible.

Child Welfare – Seeking safety, well-being, and permanent homes for children by investigating reports of suspected child abuse and neglect on behalf of Maine communities, working to ensure the well-being of children by guiding families as they create safe homes for their children, and providing temporary care for children when needed. Child welfare also includes Maine’s Office of Violence Prevention which provides support and funding to domestic violence and sexual assault organizations across the state.

Early Childhood Education and Child Care – Overseeing Maine’s Child Care Subsidy program which provides financial support to qualifying families to access child care while the parents work or attend an educational program. Supports quality improvement in child care programs through professional development opportunities for staff and the Maine Roads to Quality program which provides technical support to providers as they seek to meet key quality benchmarks.

Children’s Licensing and Investigation Services – Licenses, monitors, and investigates all types of agencies which provide care for children, including child care providers, children’s residential facilities, and homeless shelters for youth. This division is responsible for ensuring the safety and well-being of children in all licensed out-of-home settings.

Office of Child and Family Services Leadership



Office of Child and Family Services Children's Behavioral Health



Office of Child and Family Services Children's Behavioral Health (CBHS)


13 strategic priorities developed in 2019



Implementation of those short-term and long-term initiatives

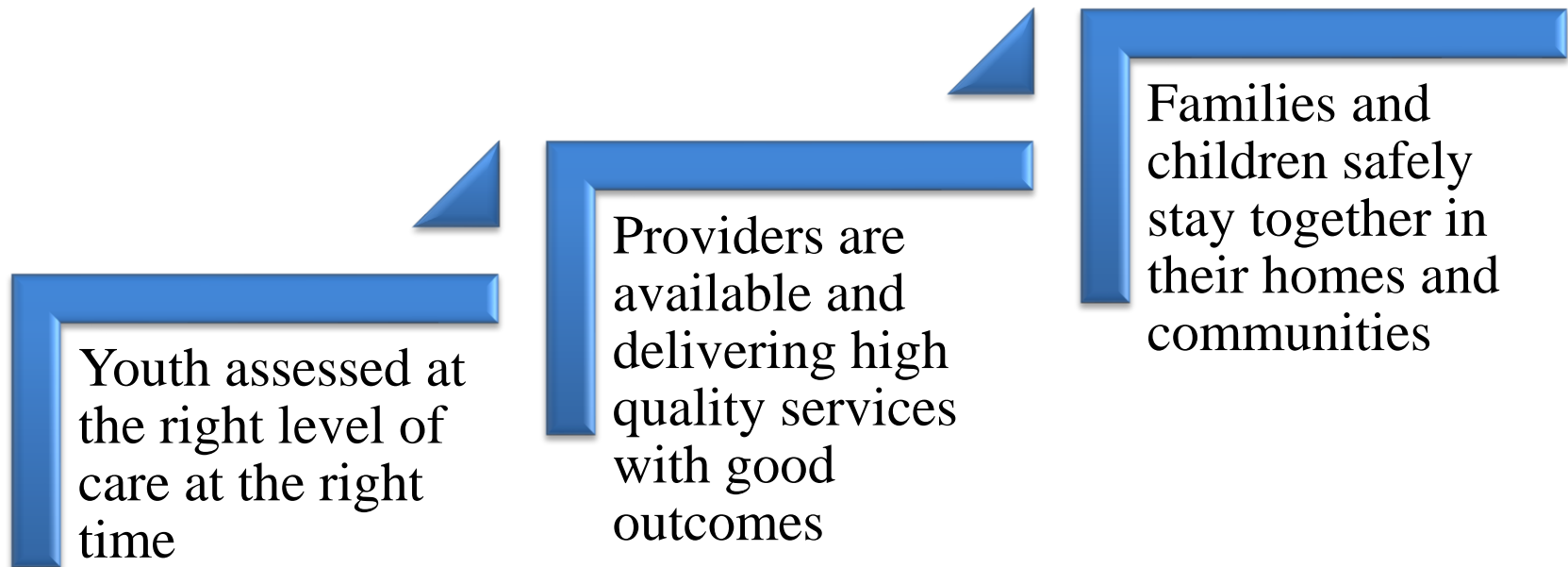


New opportunities – System of Care Grant, Crisis Planning Grant, increased FMAP



Governor's proposed biennium budget initiatives, including \$17 million toward CBH

Office of Child and Family Services Children's Behavioral Health (CBHS)



Office of Child and Family Services Children's Behavioral Health (CBHS)

Service Availability

Rate Studies

During 2022 OCFS worked with MaineCare to conduct comprehensive rate studies completed in December of 2022

Increased Rates

New permanent rates effective in 2023. Rates include funding an "essential support worker" at 125% of the State minimum wage

One-Time Funding

The Department has also provided one-time payments to behavioral health providers to help stabilize their operations after the financial impacts of the pandemic and current hiring environment

Ongoing Rate Review

MaineCare has implemented a system of periodic rate reviews for all MaineCare services to ensure rates do not stagnate and providers will receive funding necessary to hire and retain qualified staff

Office of Child and Family Services

Children's Behavioral Health (CBHS)

Evidence-Based Services

- Services with evidence that supports their effectiveness, when delivered to fidelity, ensure Maine is maximizing the impact of the services available as well as the dollars spent on those services
- Expanding access to evidence-based services has been a goal of both OCFS and the Maine Children's Cabinet
- OCFS has provided no-cost training with materials to eligible clinicians to allow them to become certified in several evidence-based treatment models, providers are also reimbursed for their time spent in training to maximize participation
- Hundreds of clinicians statewide have engaged in these training opportunities with new cohorts planned for 2023
- OCFS has also partnered with MaineCare to add evidence-based treatment modalities to the MaineCare Benefits Manual and in some cases MaineCare is offering an enhanced rate for services delivered by a clinician who is certified in the evidence-based model
- OCFS is in the process of hiring a contracted Evidence-Based Practice (EBP) Specialist

Office of Child and Family Services

Addressing Service Availability

OCFS led efforts to expand evidence-based services through no-cost trainings and partnering with MaineCare to add evidence-based models as MaineCare reimbursed benefits

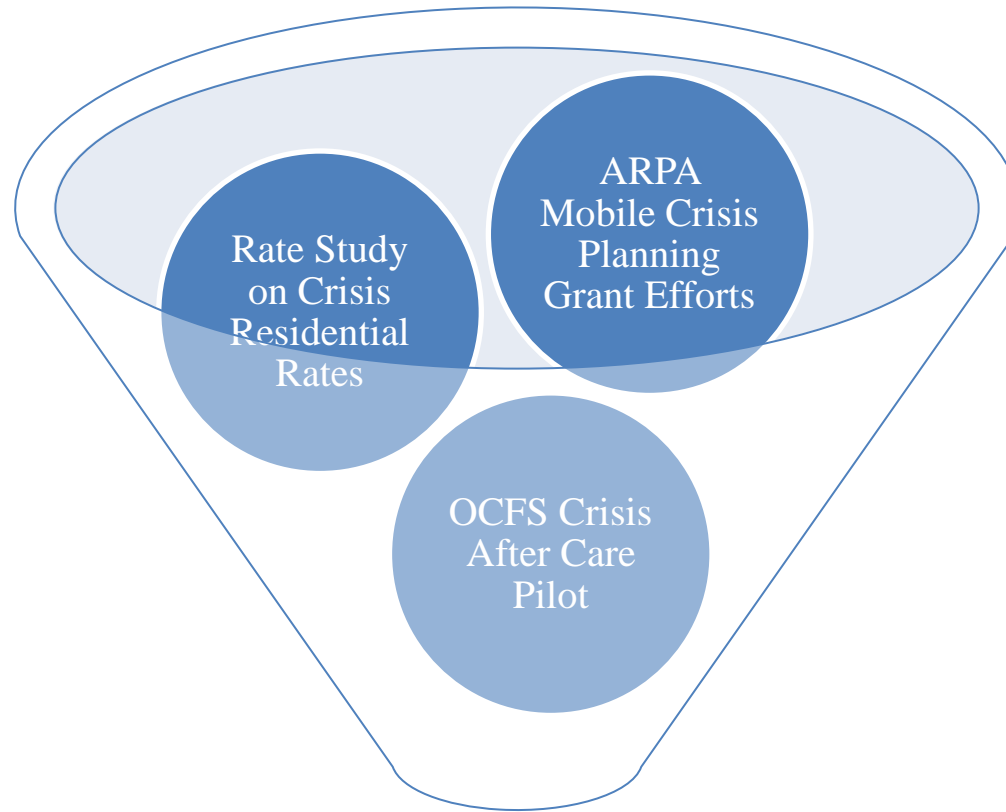
No Cost Trainings to Certify Eligible Clinicians in Evidence-Based Models

- Trauma-Focused Cognitive Behavioral Therapy (TF-CBT)
- Triple P - Positive Parenting Program (including all four versions of Triple P)
- Research Units in Behavioral Intervention (RUBI)
- MATCH-ADTC (Modular Approach to Therapy for Children with Anxiety and Depression, Trauma, or Conduct Problems)
- A-CRA (Adolescent Community Reinforcement Approach)

Evidence-Based Models Added to the MaineCare Benefits Manual

- Trauma-Focused Cognitive Behavioral Therapy (TF-CBT)
- Multisystemic Therapy (MST)
- Multisystemic Therapy for Problem Sexual Behavior (MST-PSB)
- Functional Family Therapy (FFT)
- Positive Parenting Program (Triple P)
- Incredible Years Parenting Program (IY)
- Parent Child Interaction Therapy (PCIT)

Office of Child and Family Services CBHS Crisis System



**Improvements to the Crisis
System of Care**

Office of Child and Family Services

CBHS Crisis Aftercare Pilot

Provides youth and families with support as youth transition home from the emergency department, psychiatric hospitalization, crisis stabilization, and residential treatment

Goal of reducing the number and length of youth's stays in out-of-home settings by providing supportive services that enable the youth to remain safely in their community and with their family

246 families statewide have been served; 79% did not go to the emergency department for a crisis once they engaged with the aftercare provider and assessments have shown a significant reduction in the average service intensity needs of youth who engage with the service

The aftercare model will be incorporated into the new MaineCare rates for crisis services that are currently being studied

Office of Child and Family Services

CBHS System of Care Grant

Provides family and youth peer support, utilizes individuals with lived experience, educates families on the services available in Maine, and creates training opportunities for providers

Grant funds have been used to support the rebuilding of the CBHS quality assurance team which provides quality oversight and continuous quality improvement for services

4-year, \$8.5 million federal grant to improve services available to youth with serious emotional disturbance in their homes and communities

In year two of the grant the goal was to serve 100 children and families with HCT while improving coordination across various children's services; OCFS exceeded that goal by enrolling 166 youth in year two

Office of Child and Family Services CBHS Governor's Budget Proposal

Fund an Independent Single Assessment Process

Start-Up Funding for Therapeutic Foster Care

Start-Up Funding for Multi-Dimensional Family Therapy

Additional Training Funding

Expanded Public Education on Treatment Options

Funding and Positions to Make Permanent the Six System of Care Positions

Establishes 7 New Positions to Support Ongoing System of Care Work

Funding and Position to Make the Developmental Disabilities Resource Coordinator Position Permanent

Continues funding for a limited-period Youth Substance Use Disorder Specialist

Office of Child and Family Services

CBHS Strategic Priorities 2023-2026

Improve the **Accessibility** for Children's Behavioral Health Services

- Implement evidence-based screening tools and person-centered planning
- Implement improvements in the Behavioral Health Home and Targeted Case Management services to provide wrap around services and continuity of care
- Develop and implement a statewide, publicly available, behavioral health service locator tool
- Design and implement mobile crisis services
- Establish a statewide public education campaign regarding mental health and available care and resources

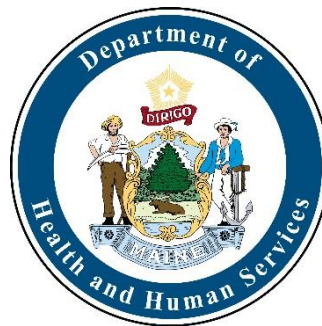
Improve **Availability** of Children's Behavioral Health Services

- Develop and deploy recruitment campaigns for behavioral health professionals and reduce barriers to training
- Update the system for Therapeutic Foster Care, including the service model and funding
- Review and revise reimbursement methodology for children's behavioral health services
- Expand the variety of services available to ensure the appropriate services are available to meet the needs of children and families
- Implement High Fidelity Wrap Around Services (HFW) to address the needs of children involved in multiple systems
- Continue to pursue establishment of a Psychiatric Residential Treatment Facility (PRTF) as part of a full continuum of care

Improve the **Quality** and **Consistency** of Children's Behavioral Health Services

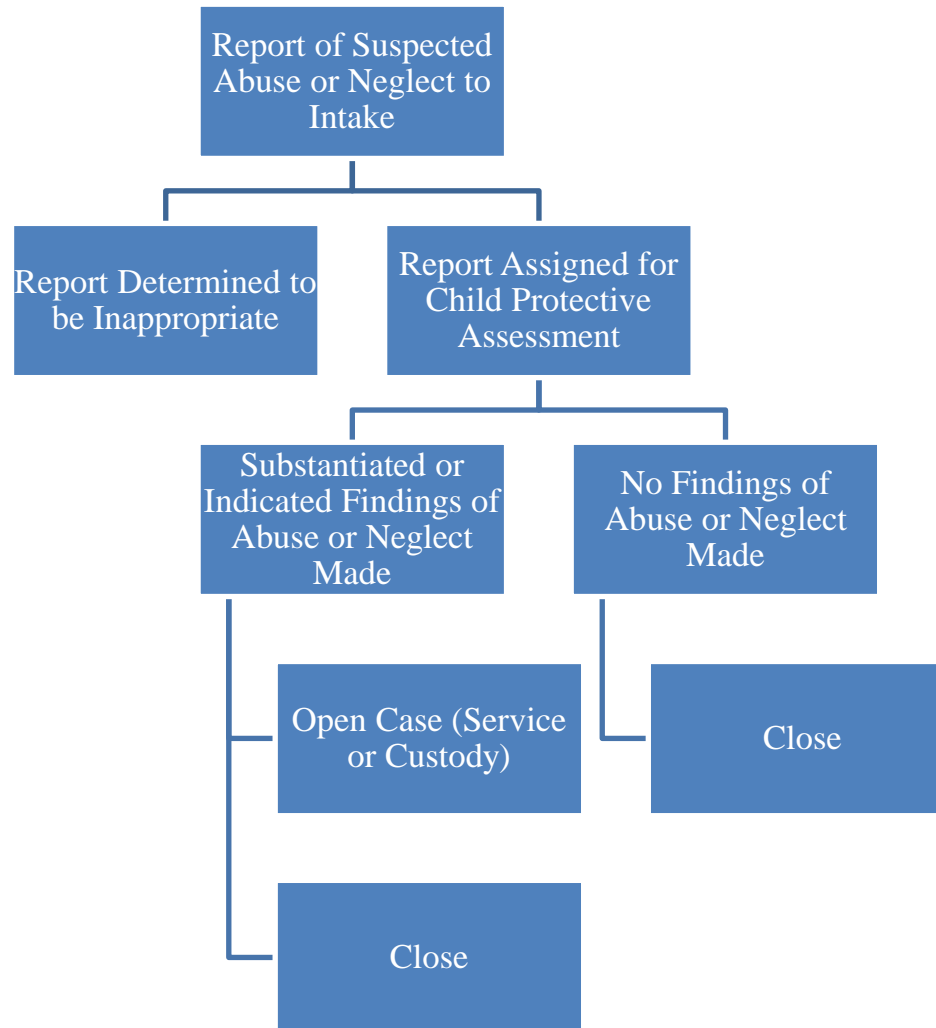
- Establish a permanent system to provide oversight and quality assurance feedback to providers
- Implement and enforce licensing requirements for all providers
- Continue to furnish provider trainings in evidence-based treatment modalities
- Implement provider accountability measures to ensure consistent and safe treatment
- Ensure a comprehensive community-based approach for children with intellectual disability or autism spectrum disorder

Office of Child and Family Services Child Welfare Services



Office of Child and Family Services

Child Welfare



Office of Child and Family Services

Child Welfare

- In 2022 Intake received **28,602** reports of suspected abuse and/or neglect, **11,262** were deemed appropriate and assigned for investigation
- 2,437 children in care (including those over the age of 18 who are engaged in a voluntary care agreement to provide support after they would otherwise “age out” of care, the upper age limit for voluntary care agreements was extended last year from 21 to 23)
- Placement of children in state custody:
 - 41% in kinship care
- Placement Stability:
 - Measured by looking at all children who entered state and the rate of placement moves per 1,000 days in foster care
 - National average is 4, Maine’s rate is 3.1
- Timeliness to Permanency:
 - Permanency within 12 months: 25.5%
- Success in Permanency:
 - The federal goal for success in permanency is that 91.7% or more of children who were discharged from State custody did not return in State custody for at least 12 months, the most recent data indicates Maine is meeting this standard at 92%

Office of Child and Family Services

Child Welfare: Commitment to Transparency

Child Welfare Data Dashboard

Data dashboards: [Child Welfare](#) | [Children's Behavioral Health](#) | [Early Childhood Education](#)



Success in Permanency within 12 Months

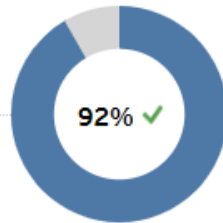
The goal for children and youth is to transition to safe life-long families after leaving State custody. This report shows the percentage of children and youth that discharged from State custody and did not return to State custody for at least 12 months.

Select Month/Year

November 2022



State Average

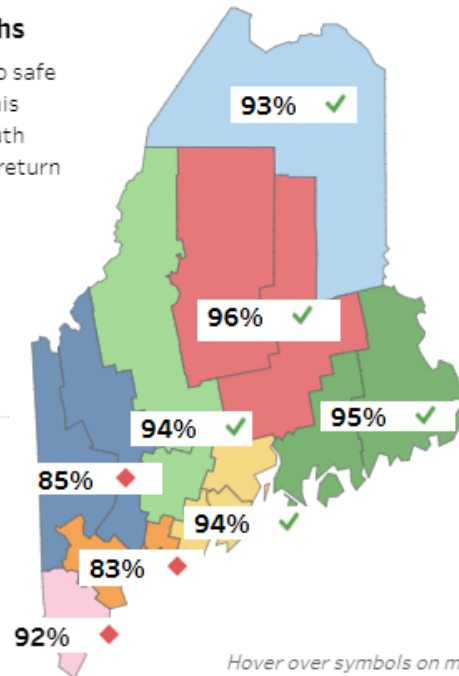


National Standard:

91.7% or greater

(a higher percentage is better)

The National Standard is an average set by the Federal government to monitor each State's performance on key child welfare outcomes.



Hover over symbols on map for detailed information.

Office of Child and Family Services

Federal Child and Family Services Review (CFSR)

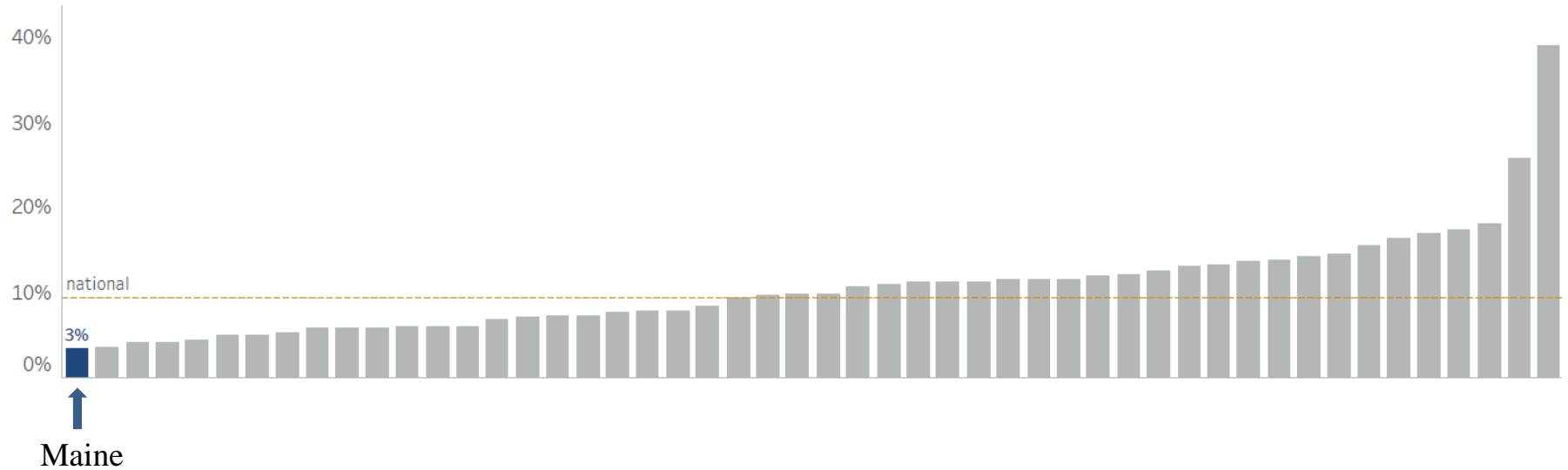
Conformity with Child & Family Outcomes	ME	CT	MA	NH	RI	VT
Safety 1: Children are, first and foremost, protected from abuse and neglect.	No	No	No	No	No	No
Safety 2: Children are safely maintained in their homes wherever possible and appropriate.	No	No	No	No	No	No
Permanency 1: Children have permanency and stability in their living situations.	No	No	No	No	No	No
Permanency 2: The continuity of family relationships and connections is preserved for children.	No	No	No	No	No	No
Well-being 1: Families have enhanced capacity to provide for their children's needs.	No	No	No	No	No	No
Well-being 2: Children receive appropriate services to meet their educational needs.	YES	No	No	No	No	No
Well-being 3: Children receive adequate services to meet their physical and mental health needs.	No	No	No	No	No	No
Conformity with Systemic Factors	ME	CT	MA	NH	RI	VT
Statewide information system	YES	No	YES	No	YES	YES
Case review system	No	No	No	No	No	No
Quality assurance system	YES	YES	No	YES	No	No
Staff and provider training	No	No	No	No	No	No
Service array and resource development	No	No	No	No	No	No
Agency responsiveness to the community	YES	YES	YES	YES	YES	YES
Foster and adoptive parent licensing, recruitment, and retention	YES	No	No	No	No	No

Office of Child and Family Services

Child Welfare

Children in Congregate Care

Percent of children in care placed in a group home or residential treatment facility (2021)

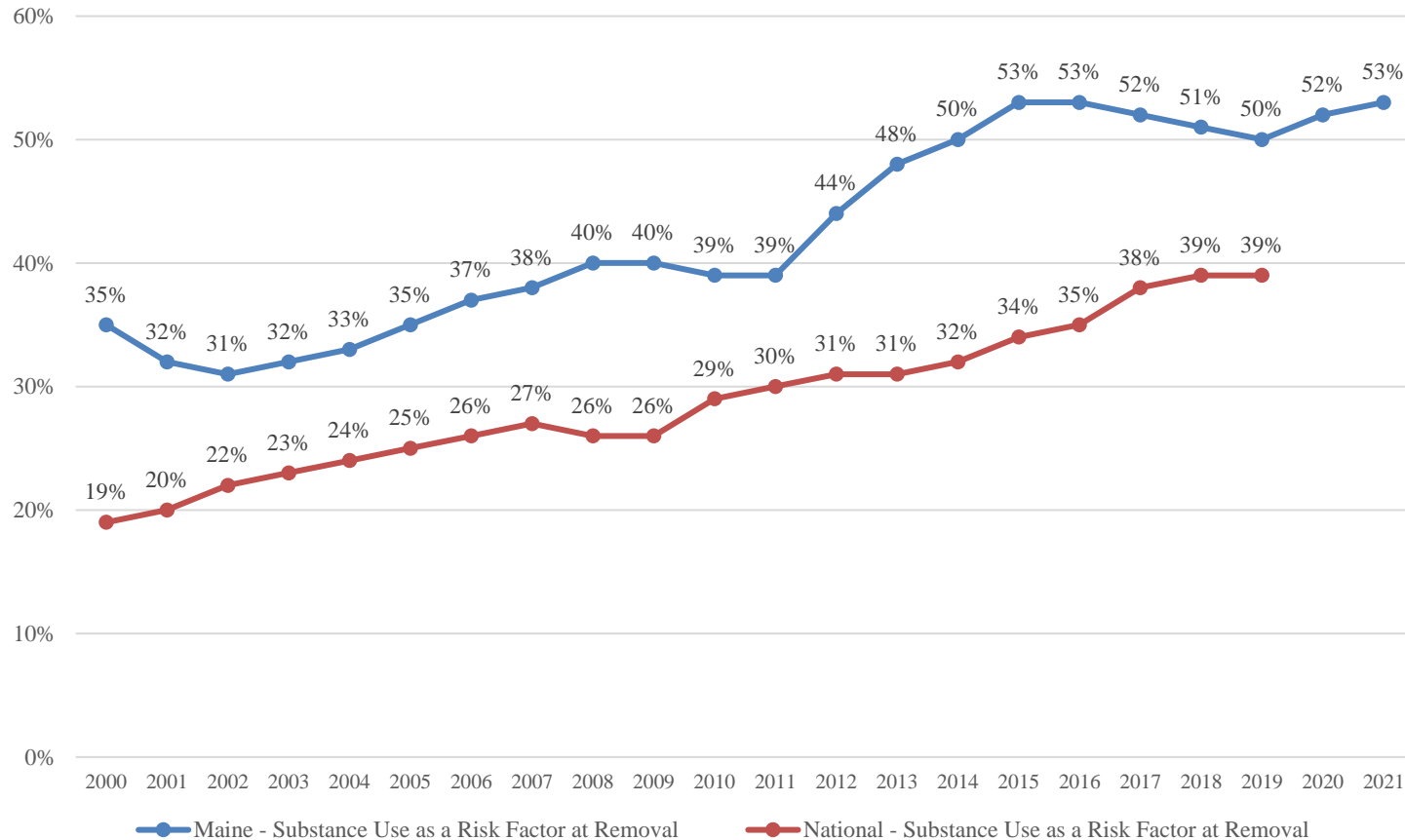


Data source: State-submitted NCANDS and AFCARS files

Office of Child and Family Services

Child Welfare: Substance Use

Rate of Substance Use as a Risk Factor at Removal



*National data not available yet for 2020 & 2021

Office of Child and Family Services

Child Welfare 2022

- ✓ Completed implementation of the recommendations from the fall 2021 Collaborative Safety and Casey Family Programs report
- ✓ Implemented the Safety Science process for critical incident reviews
- ✓ Continued efforts focused on the Strategic Priorities identified in 2019
 - Implemented Katahdin on-time and on-budget in January of 2022
 - Continued work with USM to update the entire Child Welfare Policy Manual; thus far 12 policies have been finalized with another 12 in the review and revision process
 - Implemented a new Foundations Training curriculum developed in partnership with experts at USM
 - Implemented the Field Instruction Unit
 - Additional funding to embed parents with lived experience with the team at USM to inform updates to policy and training
- ✓ Sustained our commitment to engaging staff and stakeholders in system improvement efforts
- ✓ Continued implementation of the Federal Family First Prevention Services Act

Office of Child and Family Services

Child Welfare: Bills & Budget Initiatives

Bill regarding collaboration between medical providers, law enforcement, and OCFS

Bill to amend the language regarding requirements for judicial reviews in the extended care program

One-time funding supporting children in care

5% increase in resource parent reimbursement rates

Increase funding and oversight for Court-Ordered Diagnostic Evaluations

Office of Child and Family Services

Child Welfare: Strategic Priorities 2023-2026

Safety

Improve the Consistency and Quality of CPS Intake Screening Decisions

Improve the Consistency and Quality of Child Protective Investigations

Permanency and Well-being

Improve the Consistency, Quality, and Timeliness of Permanency for Children in Care

Improve the Quality of the Health and Well-being of Children in Care

Consistency

Achieve the Goals Outlined in the CFSR/PIP Measurement Plan by January 2024

Strengthen the Child Welfare Workforce Through Efforts to Improve Recruitment, Retention, and Support

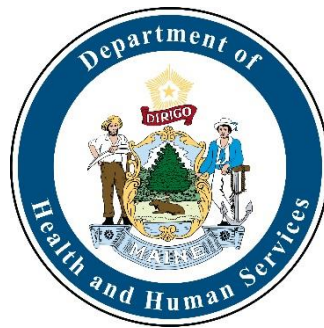
Foundational Principals

Family, Youth, and Resource Parent Engagement

Race, Equity, Diversity, and Accessibility

Collaboration with Internal and External Partners to Identify and Address Systemic Barriers

Office of Child and Family Services Early Care and Education (ECE)



Office of Child and Family Services

Early Care and Education (ECE)

OCFS Licensing and Investigation Unit oversees the licensing of child care providers (among other out-of-home care settings for children and youth) and investigates reports of abuse and/or neglect in out-of-home settings

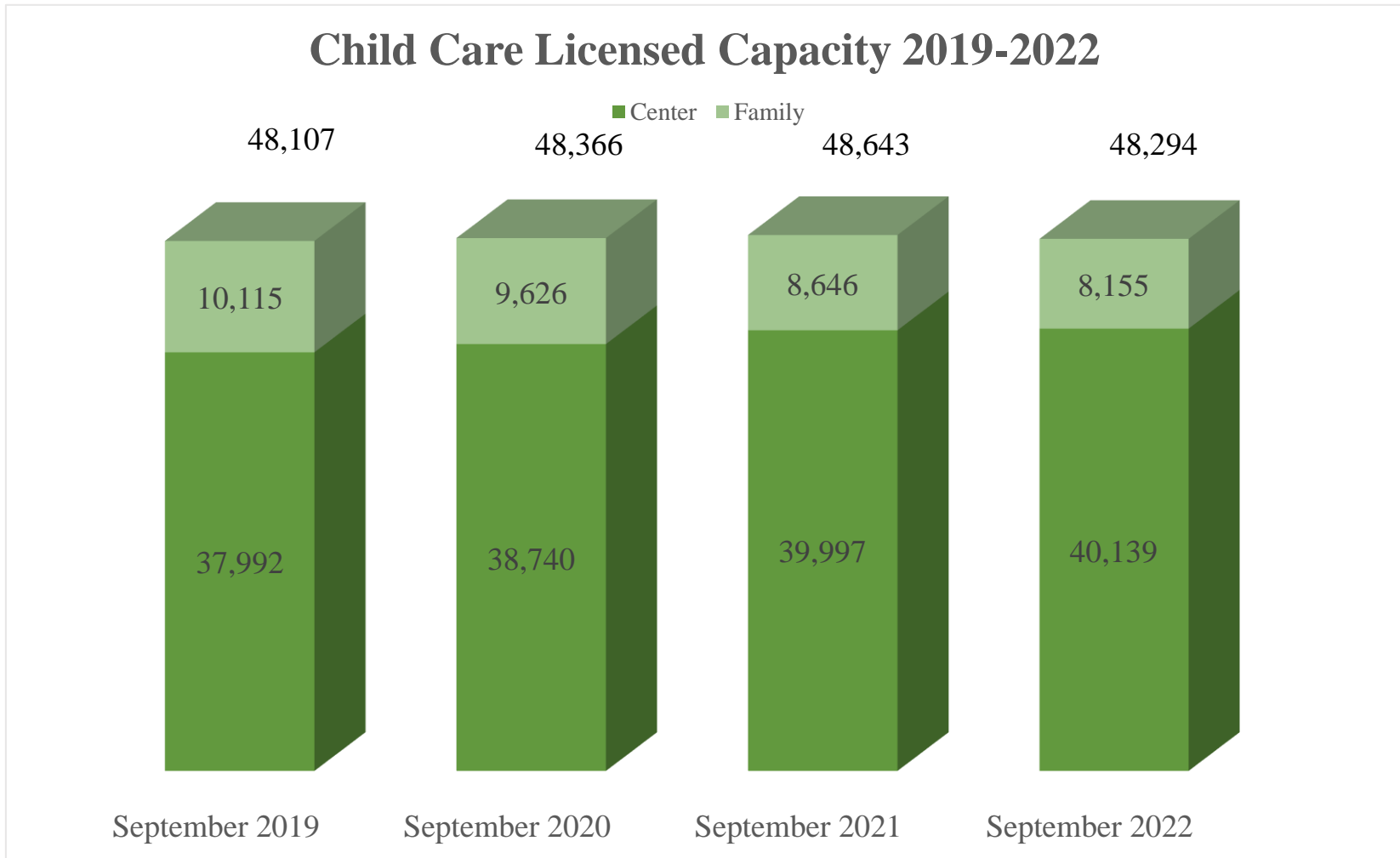
OCFS administers Maine's Child Care Subsidy Program (CCSP) utilizing Child Care Development Block Grant (CCDBG) to provide financial assistance to parents who meet income requirements and are engaged in work or a qualifying educational program

OCFS contracts with Maine Roads to Quality Professional Development Network (MRQ-PDN) to offer professional development opportunities to early childhood educators

OCFS has also implemented or is in the process of implementing a number of programs to support young children and their families

Office of Child and Family Services

ECE: Child Care Capacity



Office of Child and Family Services

ECE: Bipartisan Policy Center Analysis

Total Gap: 3,251

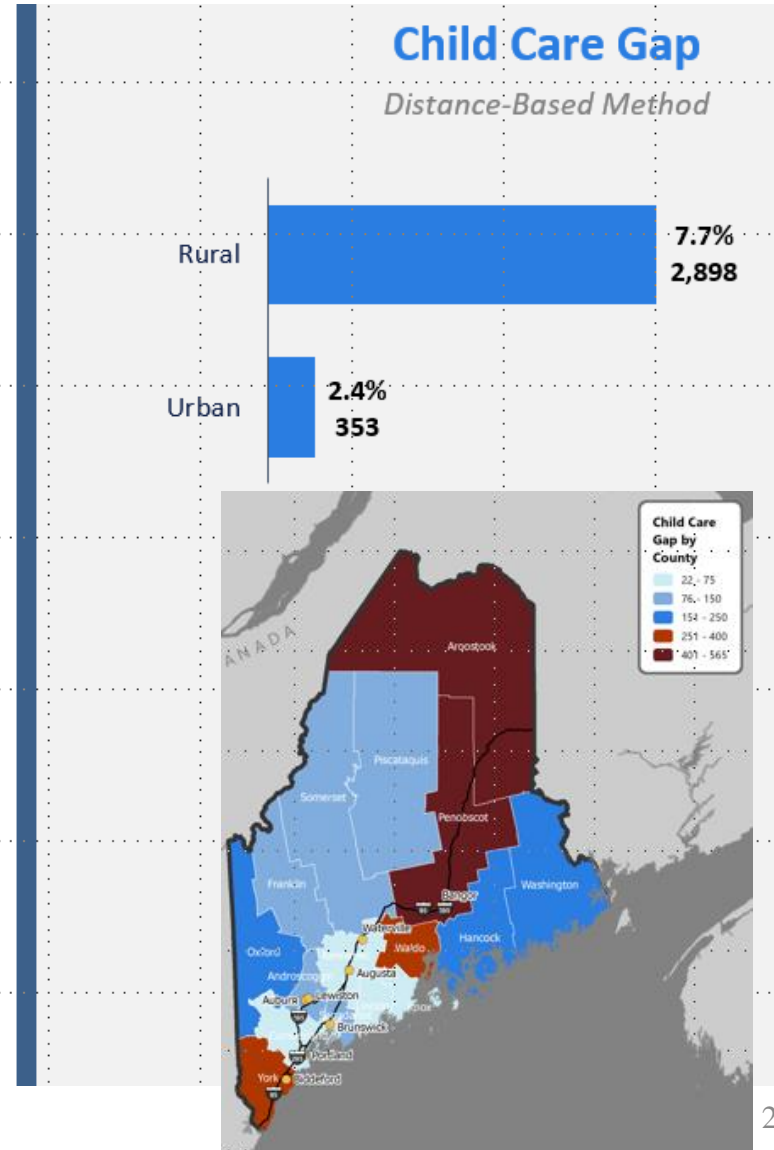
Children needing child care are matched to facilities within a specified distance from the block group they live in:

- 3.5 miles in urban areas
- 7.5 miles in rural areas
- Distance unchanged since 2020

34% Decline in Gap since 2020

32% Decline in Gap in Rural Areas

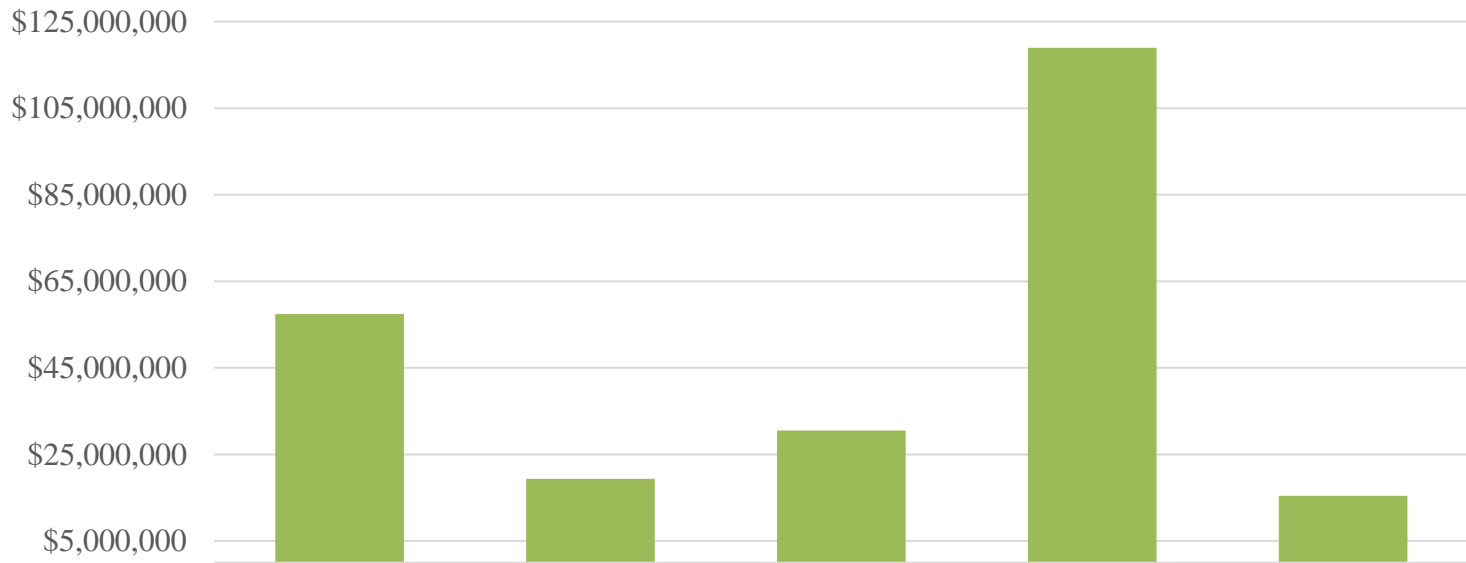
Bipartisan Policy Center
IDEAS. ACTION. RESULTS.



Office of Child and Family Services

ECE Pandemic Relief Efforts

Federal Relief – Child Care Budget Impacts



	"Base" CCDBG Funds (State and Federal FFY '23)	CARES Act + CRF	CRRSA	ARPA	Infrastructure Grants
■ Funding	\$57,462,000	\$19,380,720	\$30,506,173	\$118,928,926	\$15,444,761

Office of Child and Family Services

ECE Stabilization Grants

Facilities

- **785** providers participated
- **\$60,692,390** in stabilization grants and salary supplements delivered

Family Child Care Providers

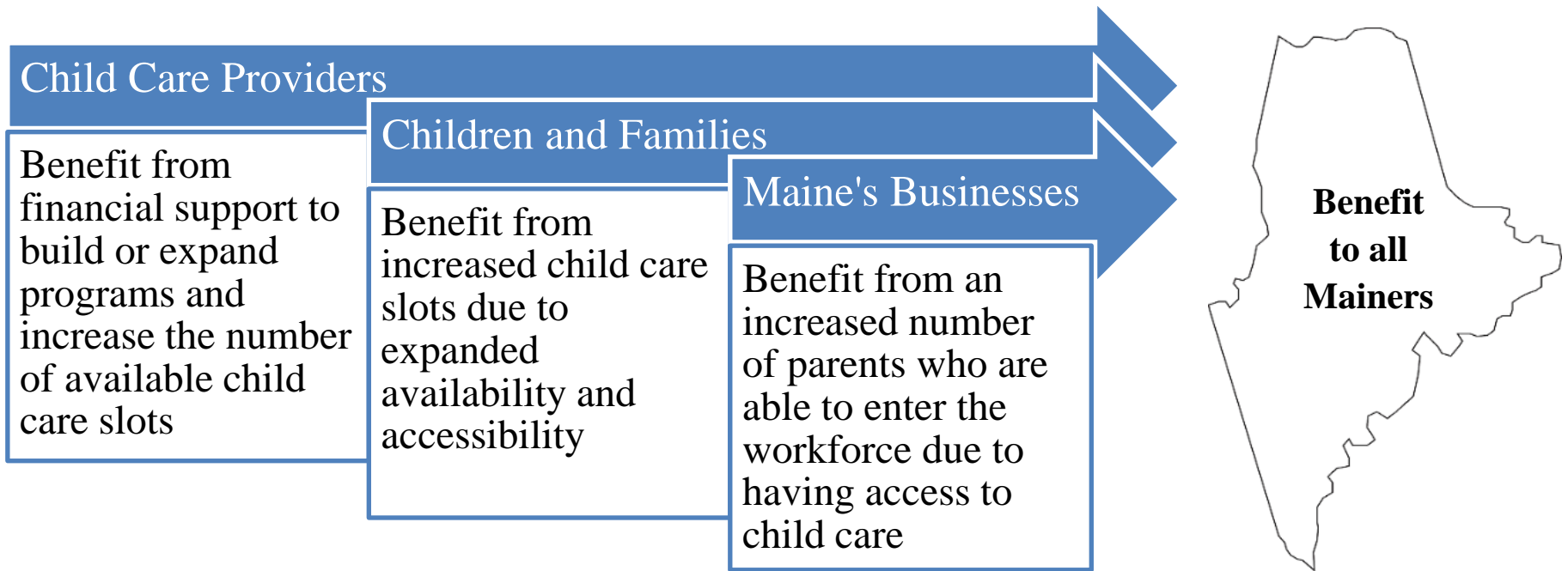
- **705** providers participated
- **\$12,210,974** in stabilization grants and salary supplements delivered

License-Exempt Providers (Non-Relative)

- **48** providers participated
- **\$394,324** in stabilization grants and salary supplements delivered

Office of Child and Family Services

ECE Infrastructure Grants



Office of Child and Family Services

ECE Initiatives

Early Childhood Consultation Partnership (ECCP)

- An evidence-based consultation service that helps child care providers, educators, and caregivers of young children to build both an understanding of the social-emotional needs of children and the skills to meet those needs

Preschool Development Grant (PDG)

- OCFS, in partnership with DOE and the Children's Cabinet, was recently awarded a three-year federal grant totaling \$24 million to build needed infrastructure and capacity to create a more coordinated, efficient, and high-quality mixed delivery system for young children

Office of Child and Family Services

ECE Initiatives

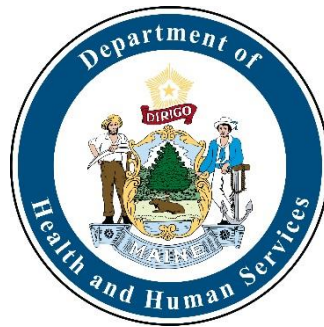
Help Me Grow

- Seeks to connect individuals with information and services about child development and community resources available to children and families
- Increasing access to early periodic screening, diagnosis, and treatment services and early intervention

First4ME Early Care and Education Program

- A two-generation, community-based approach to caring for children from birth to kindergarten, integrating comprehensive resources and services for children and families in the child care setting

Office of Child and Family Services Inter-Agency Collaboration



STATE AGENCY PARTNERSHIPS FOR PREVENTION (SAPP)

State Agencies partnering to support healthy and safe families and children across Maine.

SAPP is a partnership of state agencies working to increase access, availability and knowledge of prevention services for families in Maine. This inventory captures some of the services these agencies support and/or implement.

	Primary Prevention Services provided before any symptom or problem exists.	Secondary Prevention Interventions when risk or problem behaviors surface.	Tertiary Prevention Services provided after a problem has been identified.
	LOW RISK	AT RISK	HIGH RISK
Office of Child and Family Services	Child Abuse Prevention Councils Child Care Subsidy Program Early Childhood Mental Health Consultation Improving Youth Outcome Grants	Child Abuse Prevention Councils Targeted Case Management Youth Leadership Advisory Team Parent Coaching	Family First Prevention Services Children's Behavioral Health Services Supportive Visitation & Crisis Services Dom. Violence/Sexual Assault Services
Office of Behavioral Health	Behavioral Health Teen Text Line	Substance Use Disorder (SUD) Screening Case Management Services Supportive Housing Seals Fit Program	SUD and Mental Health Treatment SUD and Mental Health Recovery Overdose Prevention Crisis Services
Maine Center for Disease Control and Prevention	Substance Use/Tobacco/Suicide Prevention Maternal Child Health (MCH) Care Coord. Home Visitors/Public Health Nursing/WIC Newborn Screening	Prime for Life/Student Intervention Reintegration/Restorative practices School Based Health Centers Harm Reduction/Syringe NE/HIV/HEPC	Pediatric Mental Health Access Services Home Visitors/Public Health Nursing Child w/Spec. Healthcare Needs Support
Office of MaineCare Services	Developmental Screening Bright Futures Assessments Primary Care Services Immunization	Behavioral Health Screening Behavioral & Opioid Health Homes Early Periodic Screening Diagnostic Test Targeted Case Management	Behavioral Health Treatment Behavioral & Opioid Health Homes Targeted Case Management Early Periodic Screening Diagnostic Test
Office for Family Independence	Education and Training Opportunities Whole Family Approach Services Program Specific Support Services	Case management/workshops Whole Family Approach Services Respite childcare/ASPIRE	Whole Family Approach Services Respite childcare/ASPIRE Intensive Case Management
Department of Education	Social Emotional Learning Family Engagement Headstart Programs Trauma Informed Work	Restorative Practice Headstart Programs Child Development Services Adult Education (literacy, etc.)	Restorative Practice Headstart Programs Child Development Services Maine School Safety Program
Department of Labor	Adult Education Career Centers Vocational Rehabilitation	Competitive Skills Scholarships Apprenticeship Programs Youth and Veterans Services	Progressive Employment Model Services Orientation & Mobility Instruction Unemployment Compensation
Department of Corrections	Regional Collaboratives Emergency short-term housing	Restorative Justice Alternative Housing Youth Advocacy Programs Alternative Services	Restorative Justice Alternative Housing Home Based Alternative Services Youth Re-entry Programming

Office of Child and Family Services Inter-Agency Collaboration

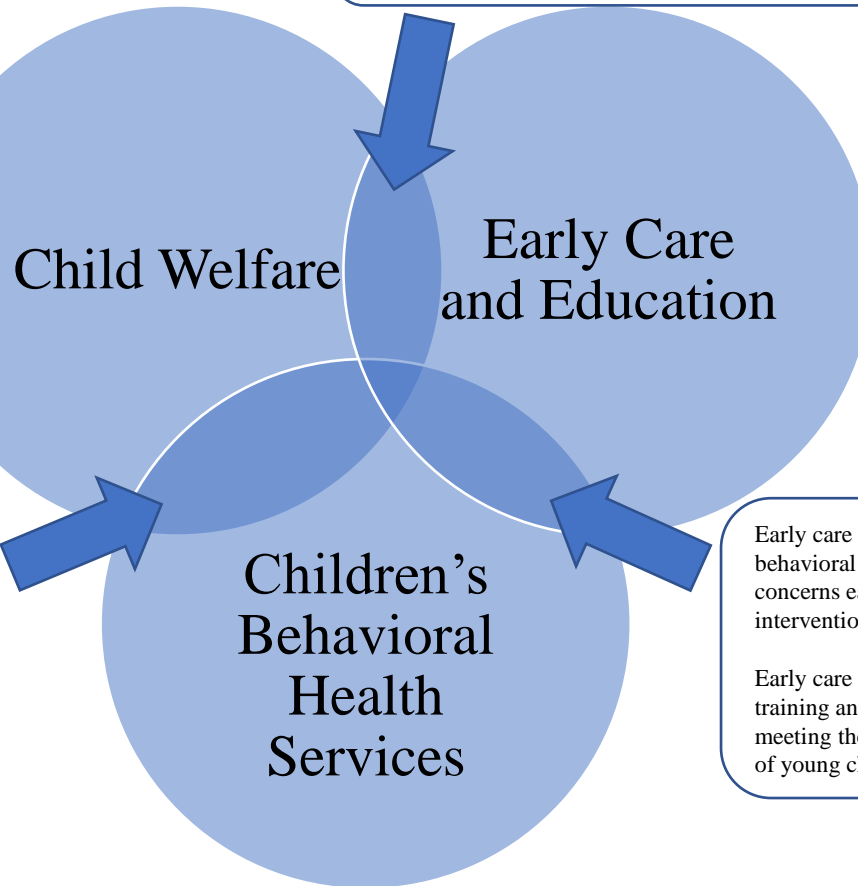


All Maine Children & Families

**SAFE, STABLE,
HAPPY, HEALTHY**

High quality early care and education allows families to work, alleviating economic stressors and guiding healthy and safe development, educators see children often and can report concerns to the Department

This same high quality care benefits children who enter state custody and enables resource parents to continue working after they have accepted placement of a child



Accessible and effective Children's Behavioral Health Services help families to ensure the safety and wellbeing of their children, in that way they are a prevention service

Children who enter state custody have often experienced trauma and may have mental and/or behavioral health needs

Early care educators can identify behavioral and/or developmental concerns early, allowing for early intervention

Early care educators benefit from training and support around meeting the social-emotional needs of young children

Collaboration With:

- Office of MaineCare Services
- Office of Behavioral Health
- Office for Family Independence
- Office of Aging and Disability Services
- Maine CDC
- Children's Cabinet
- Department of Education
- Department of Labor
- Department of Corrections

Questions?

Todd A. Landry, Ed.D.
Director
Office of Child and Family Services

